



## Howland Stone Store Museum

2956 St. Rt. 34B in Sherwood  
P.O. Box 124, Aurora, New York 13026  
[www.howlandstonestore.org](http://www.howlandstonestore.org) or 315-364-5587

Newsletter — May, 2014

---

### ANNUAL MEETING:

You are invited to join us for the **2014 Annual Meeting** of the Howland Stone Store Museum which will take place on Sunday, **May 18, 2014** at 7:00 pm at the Museum in Sherwood. The agenda will include the 2013 financial report, an update on Opendore, and election to fill four positions on the Board, three three-year terms, and one one-year term to complete the final year of a three-year term. Our first 2014 Sunday Social program will follow the *brief* meeting. **Dr. Douglas Armstrong, Anthropology professor at the Maxwell School of Syracuse University** will talk about the plans Harriet Tubman and Emily Howland discussed to run a girls' school on the Tubman property in Auburn. See the enclosed program brochure for details of our upcoming social programs.

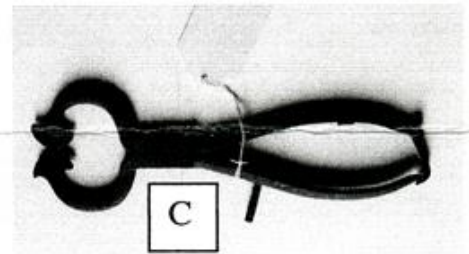
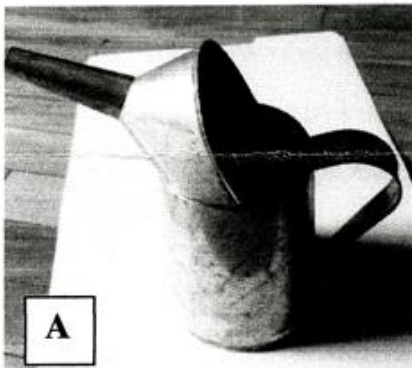
---

### 2014 Season Exhibit:

### *The Store in Sherwood—mid 19<sup>th</sup> Century*

You will find the answers to these questions in our current exhibit:

- ~What was daily life like in Sherwood during the mid-nineteenth century?
- ~Did my ancestors patronize S. Howland and Son (the stone store). Exhibit lists local family names found in old store ledgers.
- ~How many of these nineteenth century household items can you identify?



See answers over

---

### *Call for DOCENTS—Be a guide to visitors at HSSM*

*We're looking for people to help us tell the Museum story and welcome our visitors during the summer—even for just a few hours. Newer docents are always paired with those with more experience. It's a great way to learn more about Sherwood history~~ and to meet some very interesting people.*

*•• Contact [atobey1@live.com](mailto:atobey1@live.com) or 315-364-8174 ••*

## **Information Kit for Emily Howland Elementary School:**

Trudy Buxenbaum and Trisha Bowman have put together an information kit to be placed in the Emily Howland Elementary School Library. This kit provides documents and images about the life of Miss Emily Howland and the history of the school in Sherwood. This kit includes an Emily Howland scrapbook and journal, miscellaneous materials prepared by Miss Phebe King (former student, teacher, and principal in the Sherwood school, and close friend of Miss Emily), and story and pictures of the Sherwood School Bell and its move to Poplar Ridge. In addition, there are teaching units appropriate to Emily Howland students on the topics of the Underground Railroad, and seeking the right to vote for women. These materials will be available to teachers to supplement other curricular materials.

---

## **Opendore Update:**

The long harsh winter greatly delayed work at Opendore in Sherwood, but the contractor plans to resume work on Monday, May 12. He will move forward with further stabilization of various portions of the standing structure and with removal of old plaster before enclose the remaining structure. Once work starts, we will post updates on our website: [www.theopendoreproject.com](http://www.theopendoreproject.com) (or go to [www.howlandstonestore.org](http://www.howlandstonestore.org)), then click on the Opendore link.

---

## **MEMBERSHIP FORM - DUES (for 2014)**

**YES! I/We would like to support the ongoing restoration/preservation and educational programming of the Howland Stone Store Museum. (Since HSSM's total income is from donations and fund-raisers, your contribution is really appreciated.) THANK YOU!**

Name: _____	_____ \$10 individual
Address: _____	_____ \$15 family
City/State _____	_____ Additional donation
Phone: _____	_____ TOTAL enclosed
E-Mail _____	

**Make checks payable to Howland Stone Store Museum, PO Box 124, Aurora, NY 13026**

### **Volunteer Opportunities—want to help?**

_____ assist with programs or displays	_____ assist with Grants/fund-raising
_____ greet visitors Thurs or Sat p.m. (docent)	_____ assist with collection care

Photo ID of Household items: A Batter pourer (for pancakes); B Rope tightner (for cord bed); C Sugar nipper